

MKJP/KIN

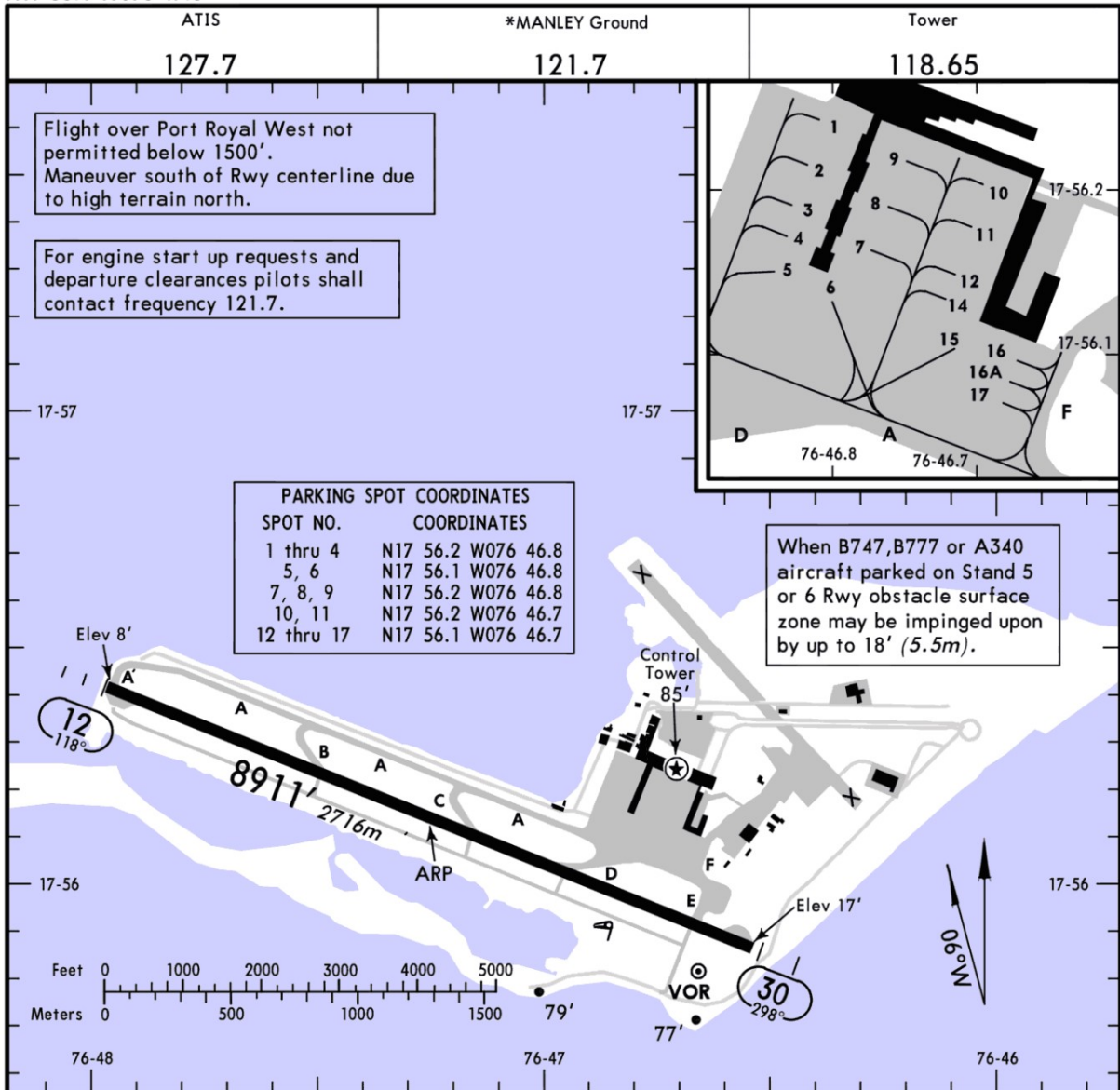
Apt Elev 10'  
N17 56.1 W076 47.3

JEPPESEN

24 OCT 14 (10-9)

KINGSTON, JAMAICA

NORMAN MANLEY INTL



ADDITIONAL RUNWAY INFORMATION

RWY		USABLE LENGTHS		TAKE-OFF	WIDTH
		Threshold	Landing Beyond Glide Slope		
12	HIRL SALS PAPI (angle 3.0°)		7889' 2405m		150'
30	HIRL SALS REIL PAPI (angle 3.0°)				46m

TAKE-OFF	
	All Rwys
1 & 2 Eng	1.9 km
3 & 4 Eng	930m

CHANGES: Enhanced accuracy.

© JEPPESEN, 1999, 2014. ALL RIGHTS RESERVED.