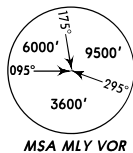


ATIS
127.7

Apt Elev
10'

- Alt Set: hPa (IN on req)
Trans level: FL 180 Trans alt: 17000'
1. Depicted speeds mandatory.
 2. Strict adherence to prescribed track required.
 3. Navigation Performance Required: RNP 4.
 4. Prior operator authorization from Jamaican Civil Aviation Authority required.
 5. FMS Code RVN 12/ROYAL1/SAVEM-RADOK Transition.
 6. FMS equipped aircraft only.

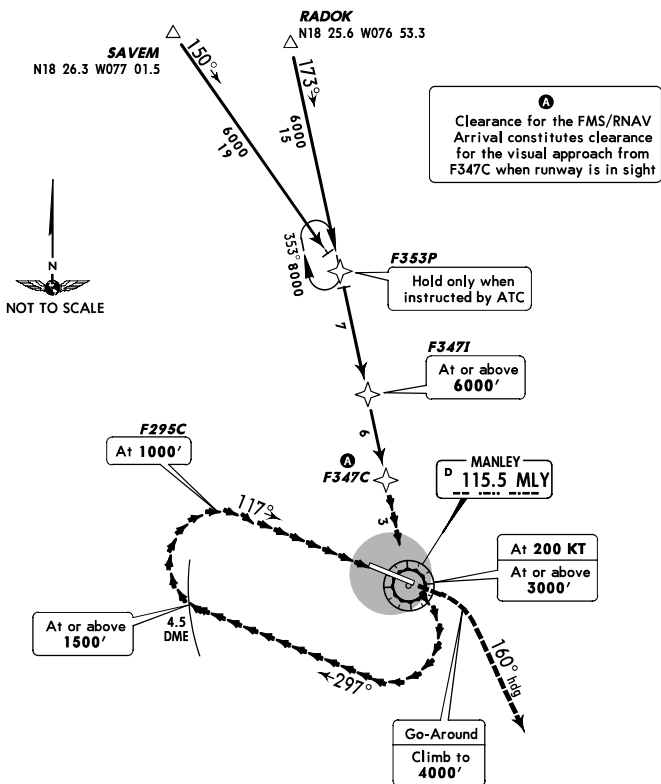


PORT ROYAL 1 FMS/RNAV ARRIVAL (RNAV 12)

[ROYAL 1]

SPEED: MAX 250 KT BELOW 10000'

(RWY 12)



This STAR requires weather minimums of:
3000' ceiling, 3 NM visibility.

ROUTING

Follow standard FMS LNAV/VNAV procedures via established waypoints to MLY. Complete visual approach from F347C.

RWY 12: RIGHT hand traffic no maneuvering NORTH of runway centerline.

GO-AROUND: The Port Royal One FMS/RNAV arrival procedure leads to a visual overhead approach and as such have no missed approach segment. If a go-around is necessary the following procedure will normally apply:

Climb to **4000'** via MLY, then RIGHT turn heading 160° and request ATC instructions.