

ATIS
127.7

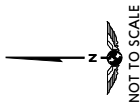
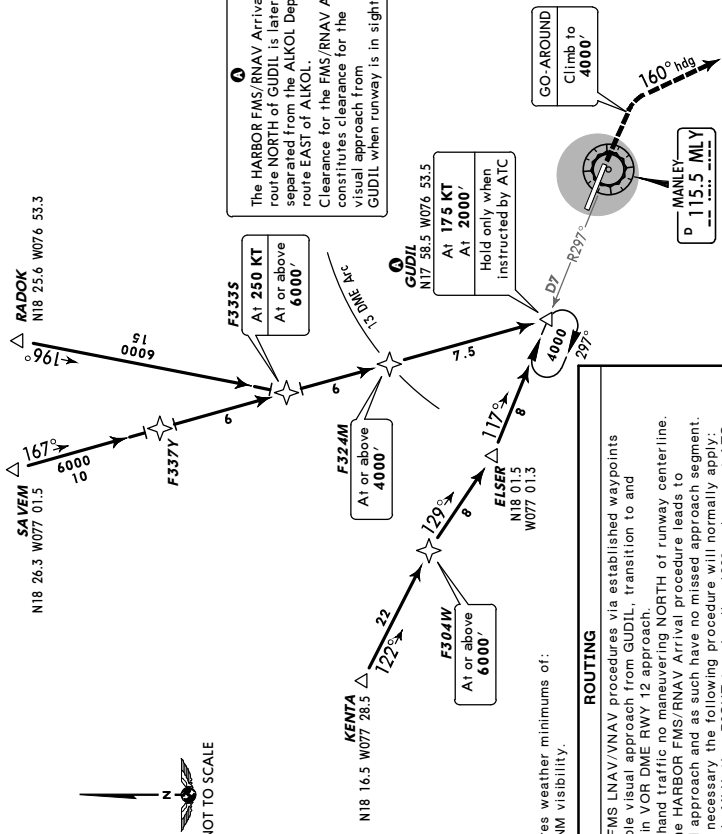
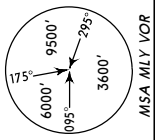
Apt Elev
10'

- Alt Set: hPa (IN on req) Trans Level: FL180 Trans alt: 17000'
1. Depicted speeds mandatory.
 2. Strict adherence to prescribed track required.
 3. Navigation Performance Required: RNP 4.
 4. Prior to operator authorization from Jamaica Civil Aviation Authority required.
 5. FMS Code RNV 12/HARBR1/XXTrans.
 6. FMS equipped aircraft only.

HARBOR 1 FMS/RNAV ARRIVAL (RNAV 12)
[HARBR1]

SPEED: MAX 250 KT BELOW 10000'
(RWY 12)

ⓐ The HARBOR FMS/RNAV Arrival route NORTH of GUDIL is laterally separated from the ALKOL Departure route EAST of ALKOL. Clearance for the FMS/RNAV Arrival constitutes clearance for the visual approach from GUDIL when runway is in sight.



ROUTING

This STAR requires weather minimums of: 2000' ceiling, 3 NM visibility.

Follow standard FMS LNAV/VNAV procedures via established waypoints to GUDIL. If unable visual approach from GUDIL, transition to and execute straight-in VOR DME RWY 12 approach.

RWY 12: RIGHT hand traffic no maneuvering NORTH of runway centerline.

GO-AROUND: The HARBOR FMS/RNAV Arrival procedure leads to a visual overhead approach and as such have no missed approach segment. If a go-around is necessary the following procedure will normally apply: Climb to 4000' via MLY, then RIGHT turn heading 160° and request ATC instructions.