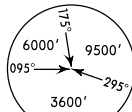


ATIS  
**127.7**

Apt Elev  
**10'**

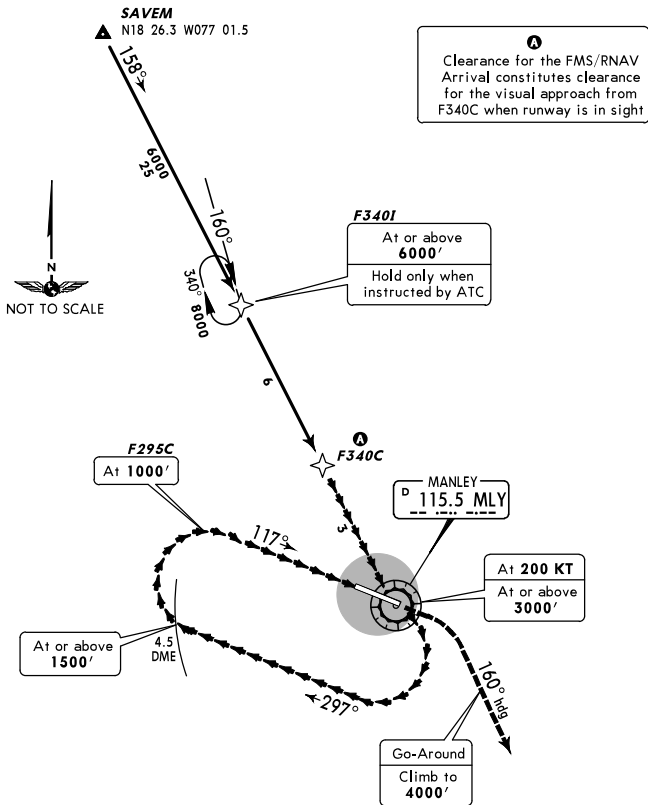
- Alt Set: hPa (IN on req)  
Trans level: FL 180 Trans alt: 17000'
1. Depicted speeds mandatory.
  2. Strict adherence to prescribed track required.
  3. Navigation Performance Required: RNP 4.
  4. Prior operator authorization from Jamaican Civil Aviation Authority required.
  5. FMS Code RNV 12/DOWTN1/SAVEM.
  6. FMS equipped aircraft only.



MSA MLY VOR

**DOWNTOWN 1 FMS/RNAV ARRIVAL RWY 12 (RNAV 12)**

**~~SPEED~~ MAX 250 KT BELOW 10000'**



**A**  
Clearance for the FMS/RNAV Arrival constitutes clearance for the visual approach from F340C when runway is in sight

This STAR requires weather minimums of:  
3000' ceiling, 3 NM visibility.

**ROUTING**

Follow standard FMS LNAV/VNAV procedures via established waypoints to MLY. Complete visual approach from F340C. If unable, climb to **4000'** via MLY, then RIGHT turn heading 160° and request ATC instructions.

**RWY 12:** RIGHT hand traffic no maneuvering NORTH of runway centerline.