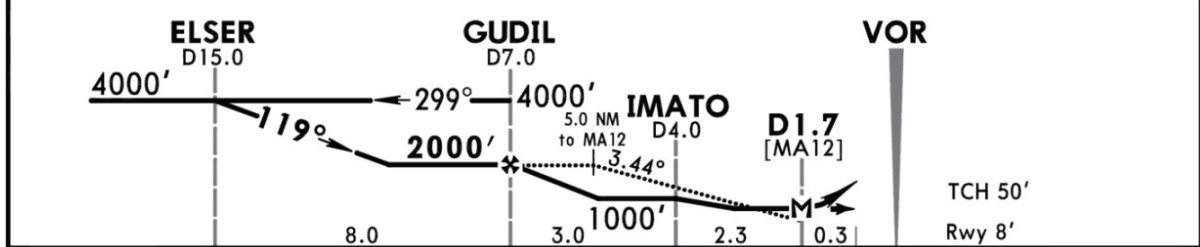
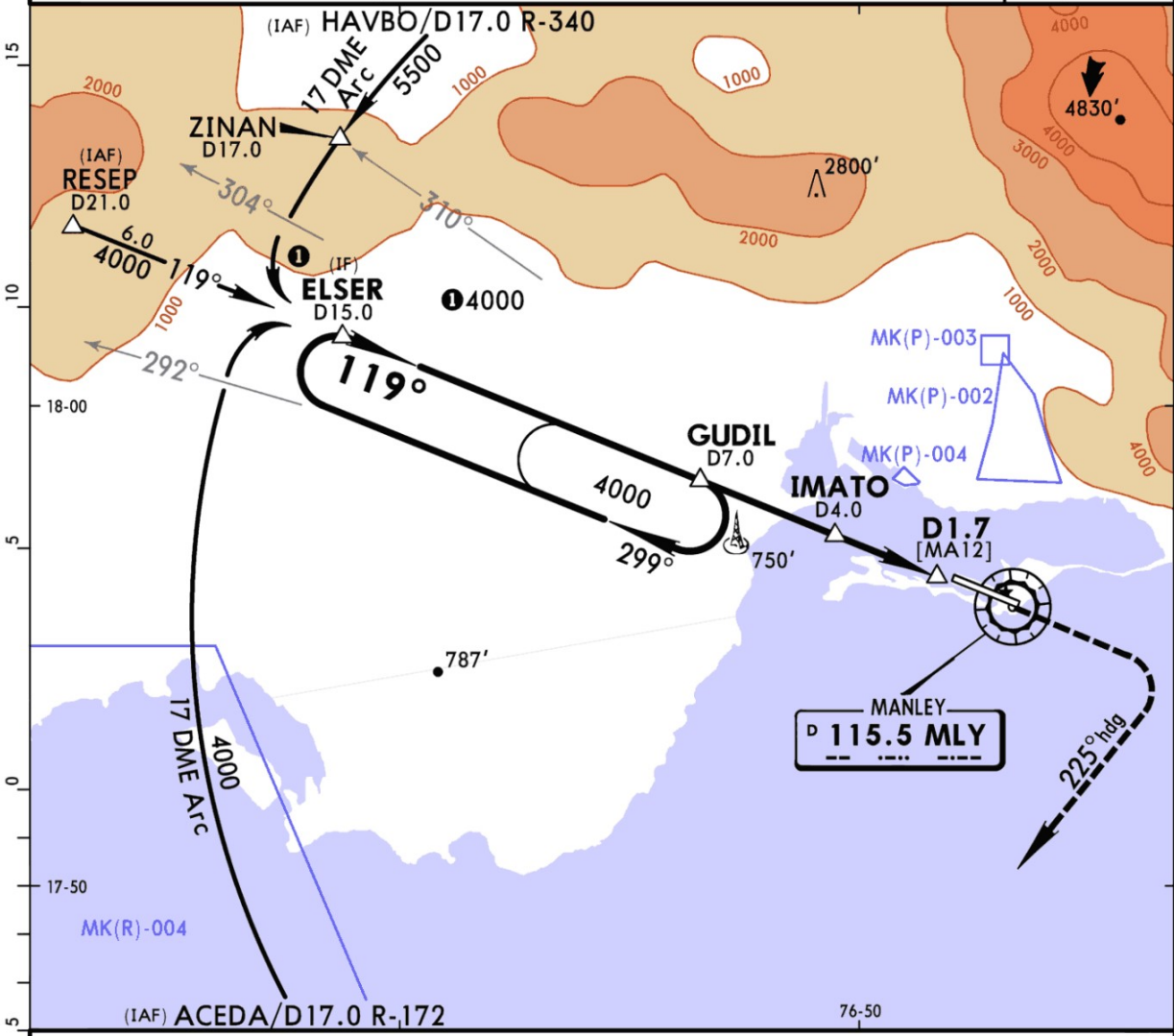


MKJP/KIN
NORMAN MANLEY INTL

JEPPESEN
 6 OCT 17 **(13-1)** Eff 12 Oct

KINGSTON, JAMAICA
VOR DME Rwy 12

ATIS 127.7		MANLEY Approach (R) 120.6		MANLEY Tower 118.65		Ground 121.7	
VOR MLY 115.5	Final Apch Crs 119°	Minimum Alt GUDIL 2000' (1992')	MDA(H) 500' (492')	Apt Elev 18' Rwy 8'			
MISSED APCH: Climb to 1000', then turn RIGHT to 225° hdg to intercept 17.0 DME MLY VOR Arc at 4000' to ELSER D15.0, thence hold at GUDIL D7.0 MLY.							MSA MLY VOR 6400'
Alt Set: hPa (IN on req)		Rwy Elev: 0 hPa	Trans level: FL 180		Trans alt: 17000'		



Gnd speed-Kts	70	90	100	120	140	160	SALS PAPI — PAPI	1000'	RT	225° hdg	
Descent Angle	3.44°	426	548	609	730	852					974
MAP at D1.7 or GUDIL to MAP	5.3	4:33	3:32	3:11	2:39	2:16					1:59

STRAIGHT-IN LANDING RWY12		CIRCLE-TO-LAND Not Authorized North of Extended Rwy Centerline	
MDA(H) 500' (492')		MDA(H)	
ALS out		Max Kts.	
A	1.8 Km	100	1050' (1032') -1.8 Km
B	1.3 Km	135	1050' (1032') -2.8 Km
C	1.3 Km	180	1150' (1132') -3.7 Km
D	2.3 Km	205	1150' (1132') -4.6 Km

PANS OPS