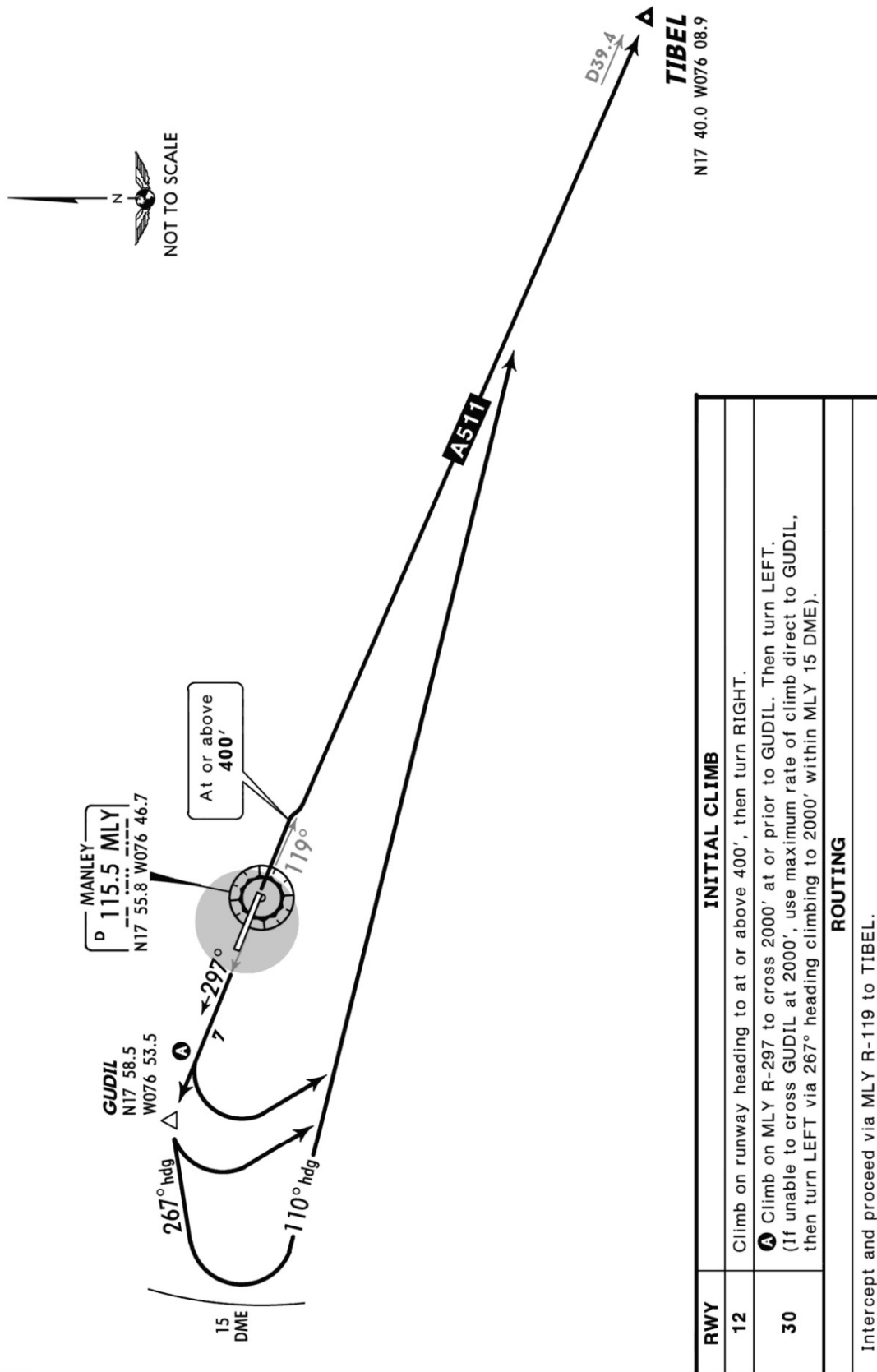


Apt Elev  
18'

Trans level: FL180 Trans alt: 17000'  
1. VOR/DME required.  
2. SOUTHBOUND departure via ATS route A-511.

TIBEL ONE DEPARTURE  
[TIBEL 1]

**SPEED: MAX 250 KT BELOW 10000'**



CHANGES: Airport elevation.

© JEPPESEN, 2005, 2014. ALL RIGHTS RESERVED.