

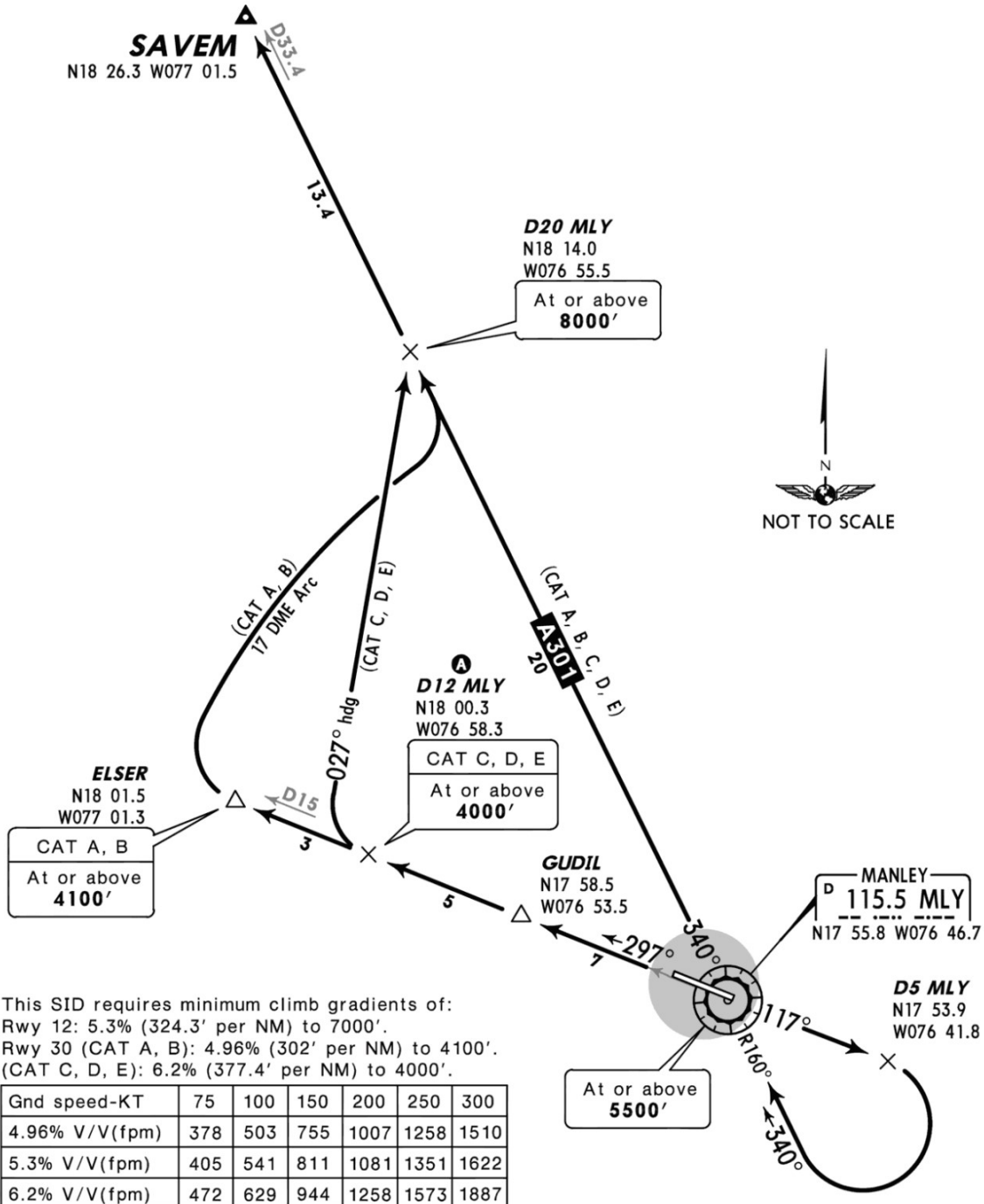
Apt Elev
18'

Trans level: FL180 Trans alt: 17000'
1. VOR/DME required.
 2. NORTHBOUND departure via ATS route A-301.
 3. Subdivided according to aircraft categories.

SAVEM FIVE DEPARTURE

[SAVEM5]

SPEED: MAX 250 KT BELOW 10000'



RWY	INITIAL CLIMB
12	CAT A, B, C, D, E: Climb on MLY R-117 to D5 MLY, turn RIGHT to intercept and proceed via MLY R-160 inbound to MLY. Turn RIGHT and proceed via MLY R-340 to SAVEM.
30	CAT A, B: Climb on MLY R-297 to ELSER, then turn RIGHT to intercept and proceed via MLY 17 DME Arc to intercept MLY R-340 to SAVEM. CAT C, D, E: Climb on MLY R-297 to D12 MLY then turn RIGHT and proceed via 027° heading to intercept MLY R-340 to SAVEM. A Provision: CAT A or B aircraft able to cross D12 MLY on MLY R-297 at or above 4000' may turn RIGHT and proceed according to CAT C and D departure.

CHANGES: Airport elevation.

© JEPPESEN, 2005, 2014. ALL RIGHTS RESERVED.

THIS CHART IS A PART OF NAVIGRAPH CHARTS AND IS INTENDED FOR FLIGHT SIMULATION ONLY