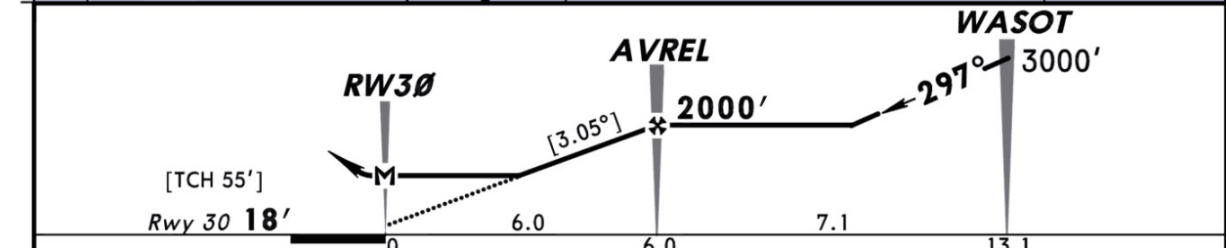
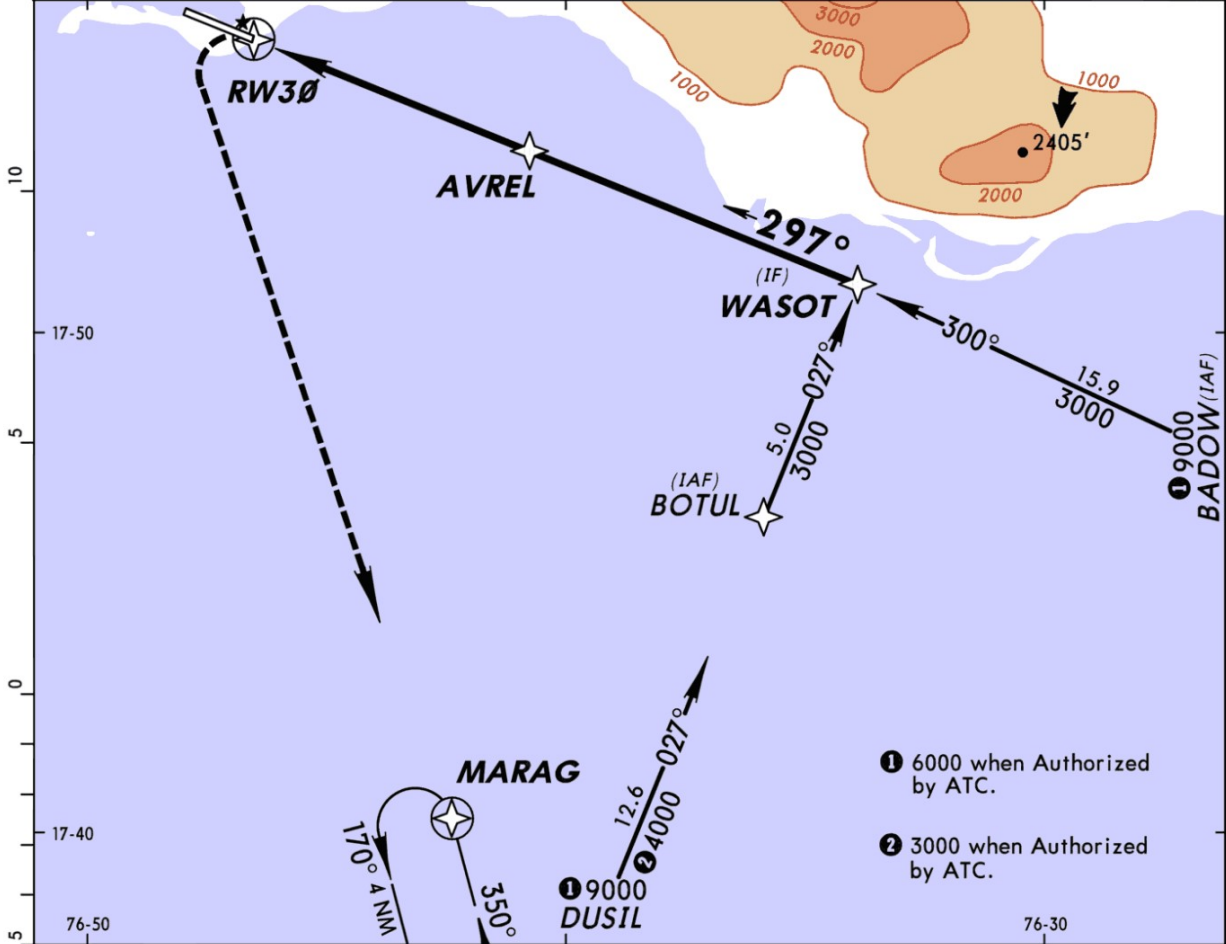


ATIS 127.7		MANLEY Approach (R) 120.6		MANLEY Tower 118.65		*Ground 121.7
RNAV	Final Apch Crs 297°	Minimum Alt AVREL 2000' (1982')	LNAV MDA(H) 390' (372')	Apt Elev 10' Rwy 30 18'		9000'
MISSED APCH: Climbing LEFT turn to 3000' direct MARAG and hold.						
Alt Set: hPa (IN on req) Rwy Elev: 1 hPa Trans level: FL 180 Trans alt 17000'						MSA MKJP ARP
1. GPS or RNP-0.30 required. 2. DME/DME RNP-0.30 not authorized.						



Gnd speed-Kts	70	90	100	120	140	160	SALS REIL PAPI_PAPI	3000' LT	MARAG
Descent angle [3.05°]	378	486	540	648	755	863			
MAP at RW30									

STRAIGHT-IN LANDING RWY 30 LNAV MDA(H) 390' (372')		CIRCLE-TO-LAND Not Authorized North of Extended Rwy Centerline	
ALS out		Max Kts	MDA(H)
A	1.9 Km	100	1050' (1040') - 2.3 Km
B		135	1050' (1040') - 2.8 Km
C		180	1150' (1140') - 5.6 Km
D		205	