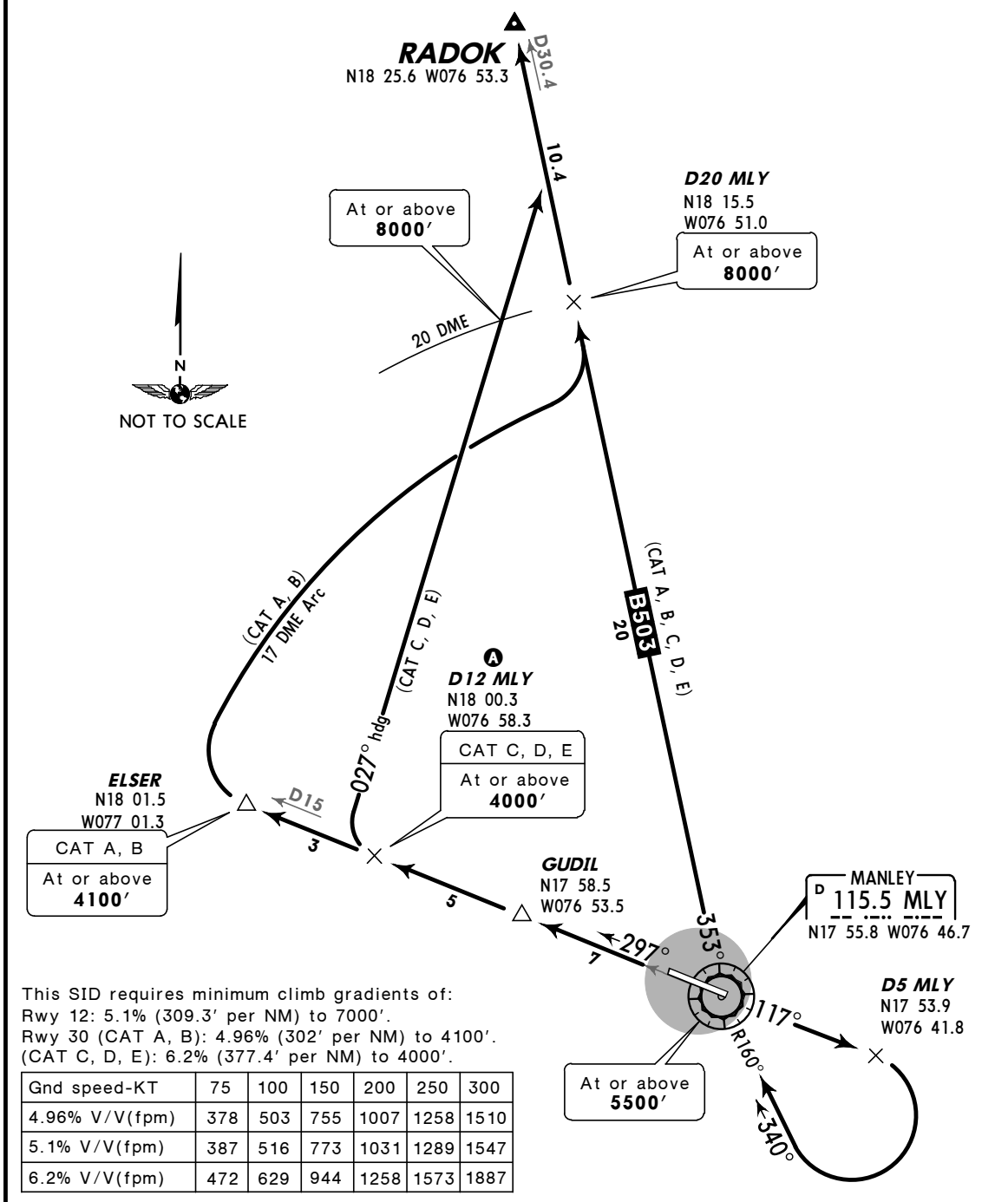


Apt Elev 18'  
Trans level: FL180 Trans alt: 17000'  
1. VOR/DME required.  
2. NORTHBOUND departure via ATS route B-503.  
3. Subdivided according to aircraft categories.

**RADOK FIVE DEPARTURE**  
[RADOK5]

**SPEED: MAX 250 KT BELOW 10000'**



RWY	INITIAL CLIMB
12	<b>CAT A, B, C, D, E:</b> Climb on MLY R-117 to D5 MLY, turn RIGHT to intercept and proceed via MLY R-160 inbound to MLY. Turn RIGHT and proceed via MLY R-353 to RADOK.
30	<b>CAT A, B:</b> Climb on MLY R-297 to ELSER, then turn RIGHT to intercept and proceed via MLY 17 DME Arc to intercept MLY R-353 to RADOK. <b>CAT C, D, E:</b> Climb on MLY R-297 to D12 MLY then turn RIGHT and proceed via 027° heading to intercept MLY R-353 to RADOK. <b>Ⓐ Provision:</b> CAT A or B aircraft able to cross D12 MLY on MLY R-297 at or above 4000' may turn RIGHT and proceed according to CAT C and D departure.