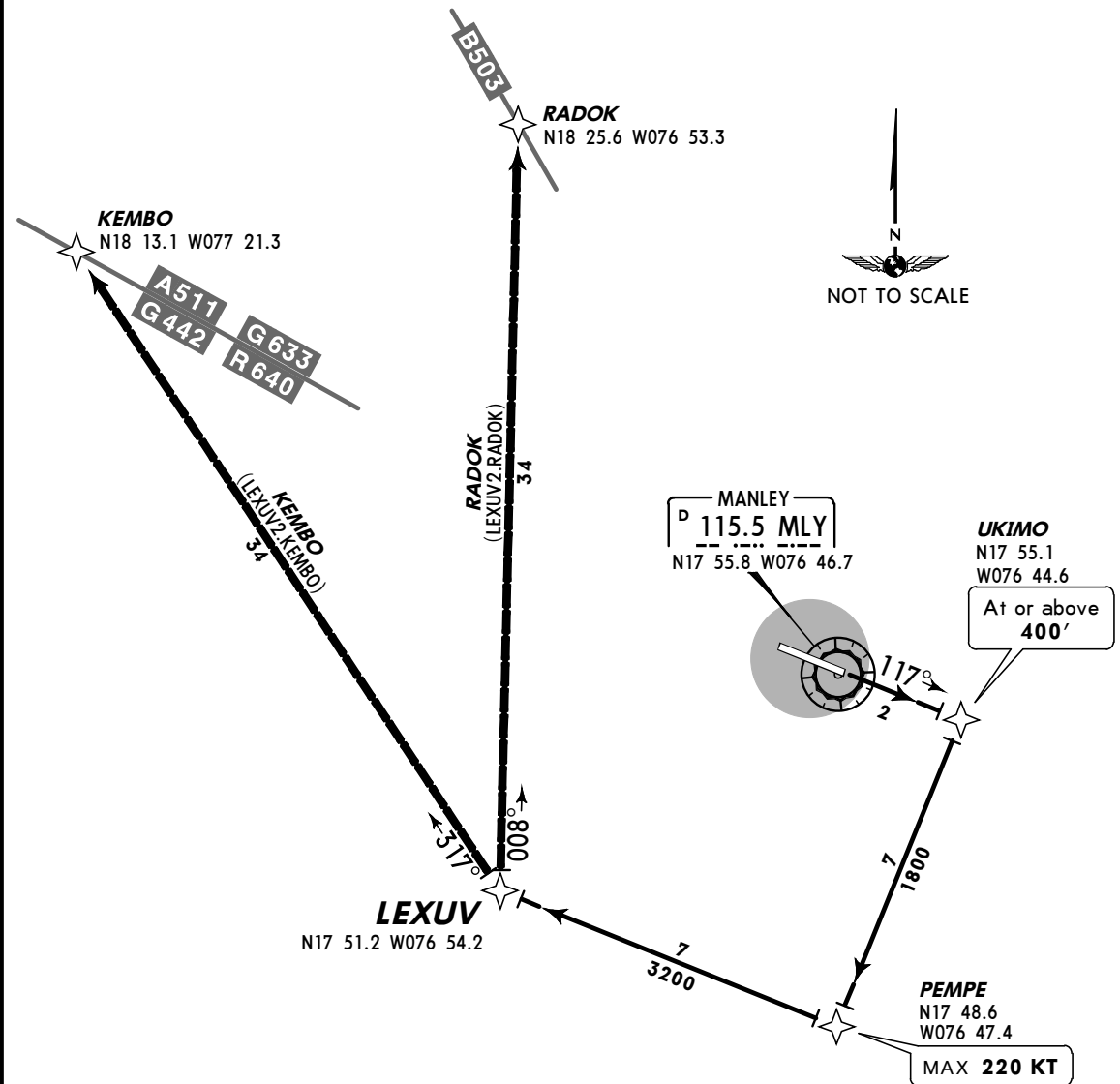


Apt Elev 18'
Trans level: FL180 Trans alt: 17000'
1. GPS required.
2. For use by /E, /F, /R (RNP 2.0), and /G equipped aircraft.
Use 1 NM Course Deviation Indicator (CDI) sensitivity.

LEXUV TWO RNAV DEPARTURE (LEXUV2.LEXUV)
[LEXUV2]
(RWY 12)

SPEED MAX 220 KT UNTIL PEMPE



This SID requires take-off minimums
(for standard minimums, refer to airport chart):
Standard.

INITIAL CLIMB

Proceed via 117° course to UKIMO, then turn RIGHT direct PEMPE, then turn RIGHT direct LEXUV. Climb to assigned altitude.

TRANSITIONS

KEMBO	Turn RIGHT direct KEMBO, then as filed.
RADOK	Turn RIGHT direct RADOK, then as filed.