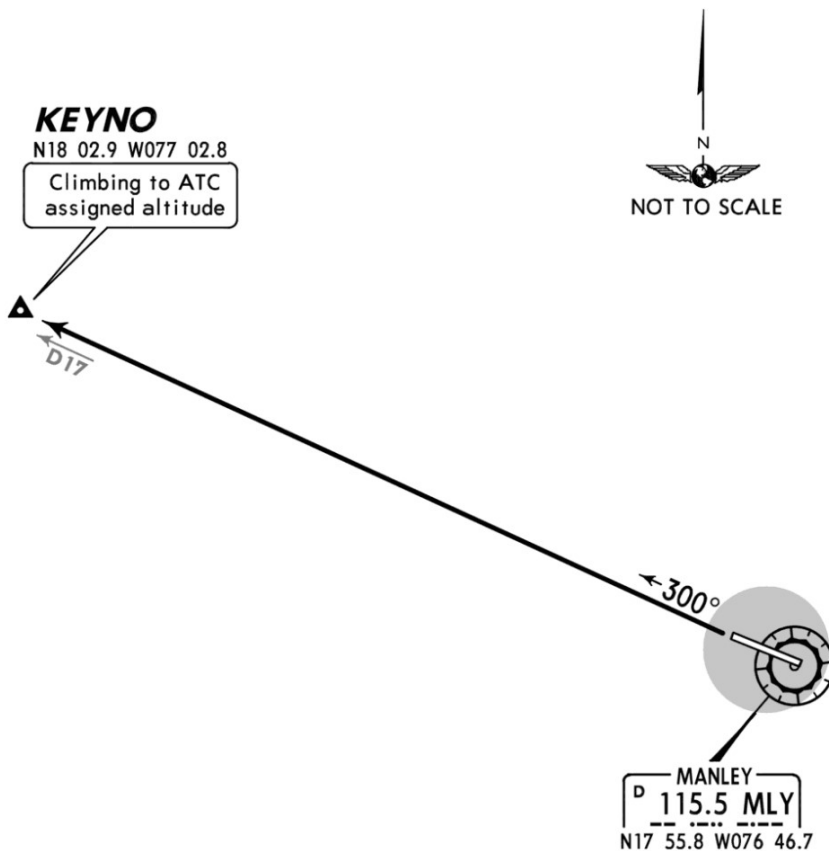


Apt Elev
18'

Trans level: FL180 Trans alt: 17000'
All routes from MLY.

KEYNO ONE DEPARTURE (VECTOR)
[KEYNO1]
(RWY 30)



LOST COMMS ▼ LOST COMMS ▼ LOST COMMS ▼ LOST COMMS ▼ LOST COMMS ▼ LOST COMMS ▼ LOST COMMS ▼ LOST COMMS ▼ LOST COMMS ▼ LOST COMMS ▼

LOST COMMS ▼ LOST COMMS ▼ LOST COMMS ▼ LOST COMMS ▼ LOST COMMS ▼ LOST COMMS ▼ LOST COMMS ▼ LOST COMMS ▼ LOST COMMS ▼ LOST COMMS ▼

On recognition of communication failure 7 minutes or less after take-off and in instrument meteorological conditions, proceed as follows:

1. Squawk 7600; and
2. MAINTAIN last assigned altitude and heading for 7 minutes after recognition of communication failure; then
3. Climb to 10000' maintaining last assigned heading; then
4. Proceed direct to nearest Fix associated with filed flight plan route continuing climb to flight plan cruising level.

If in visual meteorological conditions, continue to fly in VMC and land at the nearest suitable aerodrome.

If communication failure occurs more than 7 minutes after take-off, comply with the appropriate procedures for communication failure and proceed according to the current flight plan route to destination airport, unless it is considered inadvisable.

INITIAL CLIMB

Proceed on track 300° to KEYNO (MLY R-300/D17), climbing to altitude assigned by ATC. ATC will provide RADAR vectors to intercept filed/assigned ATS routes, before reaching KEYNO.

CHANGES: Airport elevation.

© JEPPESEN, 2007, 2014. ALL RIGHTS RESERVED.