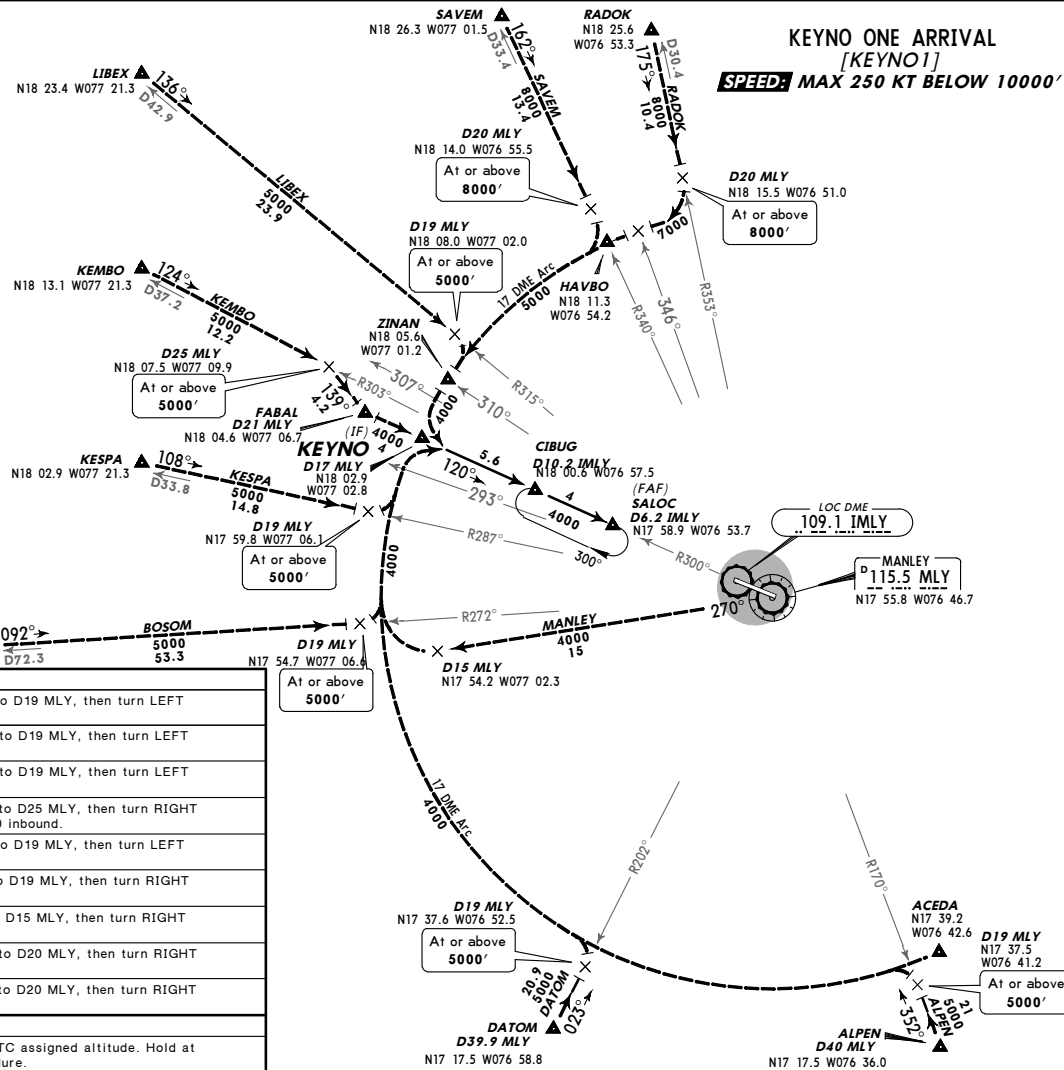


ATIS 127.7	Apt Elev 18'	Alt Set: hPa (IN on req) Trans level: FL180 Trans alt: 17000'	1. VOR/DME required. 2. DME Arcs are based on MLY.
---------------	-----------------	---	---

KEYNO ONE ARRIVAL
[KEYNO1]

SPEED: MAX 250 KT BELOW 10000'



TRANSITIONS	
ALPEN	From ALPEN to KEYNO: Via MLY R-170 inbound to D19 MLY, then turn LEFT via MLY 17 DME Arc.
BOSOM	From BOSOM to KEYNO: Via MLY R-272 inbound to D19 MLY, then turn LEFT via MLY 17 DME Arc.
DATOM	From DATOM to KEYNO: Via MLY R-202 inbound to D19 MLY, then turn LEFT via MLY 17 DME Arc.
KEMBO	From KEMBO to KEYNO: Via MLY R-303 inbound to D25 MLY, then turn RIGHT via a 139° heading to FABAL, then via MLY R-300 inbound.
KESPA	From KESPA to KEYNO: Via MLY R-287 inbound to D19 MLY, then turn LEFT via MLY 17 DME Arc.
LIBEX	From LIBEX to KEYNO: Via MLY R-315 inbound to D19 MLY, then turn RIGHT via MLY 17 DME Arc.
MANLEY	From MLY to KEYNO: Via MLY R-270 outbound to D15 MLY, then turn RIGHT via MLY 17 DME Arc.
RADOK	From RADOK to KEYNO: Via MLY R-353 inbound to D20 MLY, then turn RIGHT via MLY 17 DME Arc.
SAVEM	From SAVEM to KEYNO: Via MLY R-340 inbound to D20 MLY, then turn RIGHT via MLY 17 DME Arc.

ROUTING	
From KEYNO to SALOC via MLY R-300 inbound descending to ATC assigned altitude. Hold at SALOC unless/until cleared for the ILS Rwy 12 approach procedure.	