

Apt Elev  
18'

Trans level: FL180 Trans alt: 17000'

1. VOR/DME required.

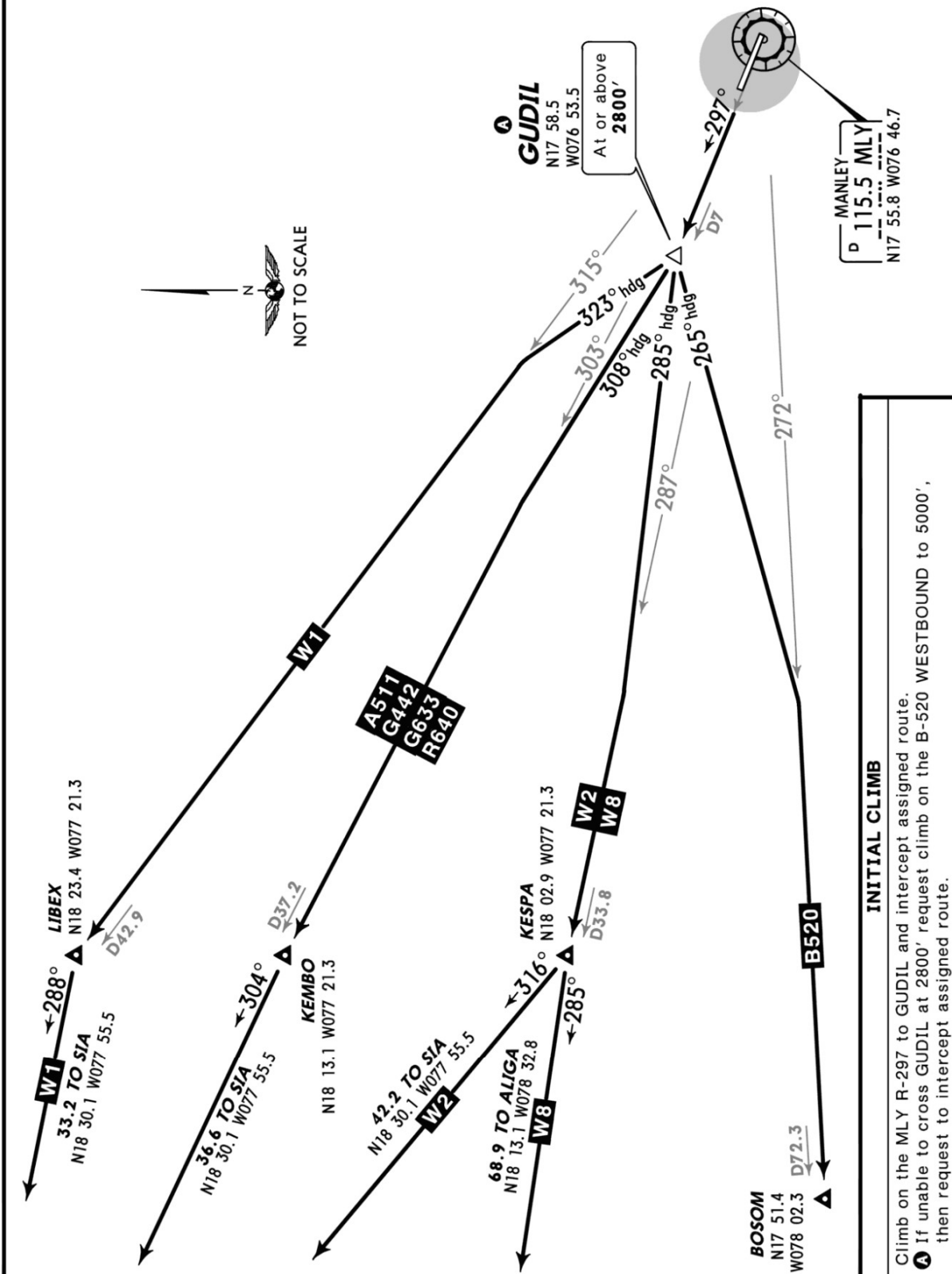
2. WESTBOUND departures from runway 30 via ATS route A-511, B-520, G-442, G-633, R-640, W-1, W-2, W-8.

**GUDIL THREE DEPARTURE**

[GUDIL3]

(RWY 30)

**SPEED: MAX 250 KT BELOW 10000'**



CHANGES: Airport elevation.

© JEPPESEN, 2005, 2014. ALL RIGHTS RESERVED.