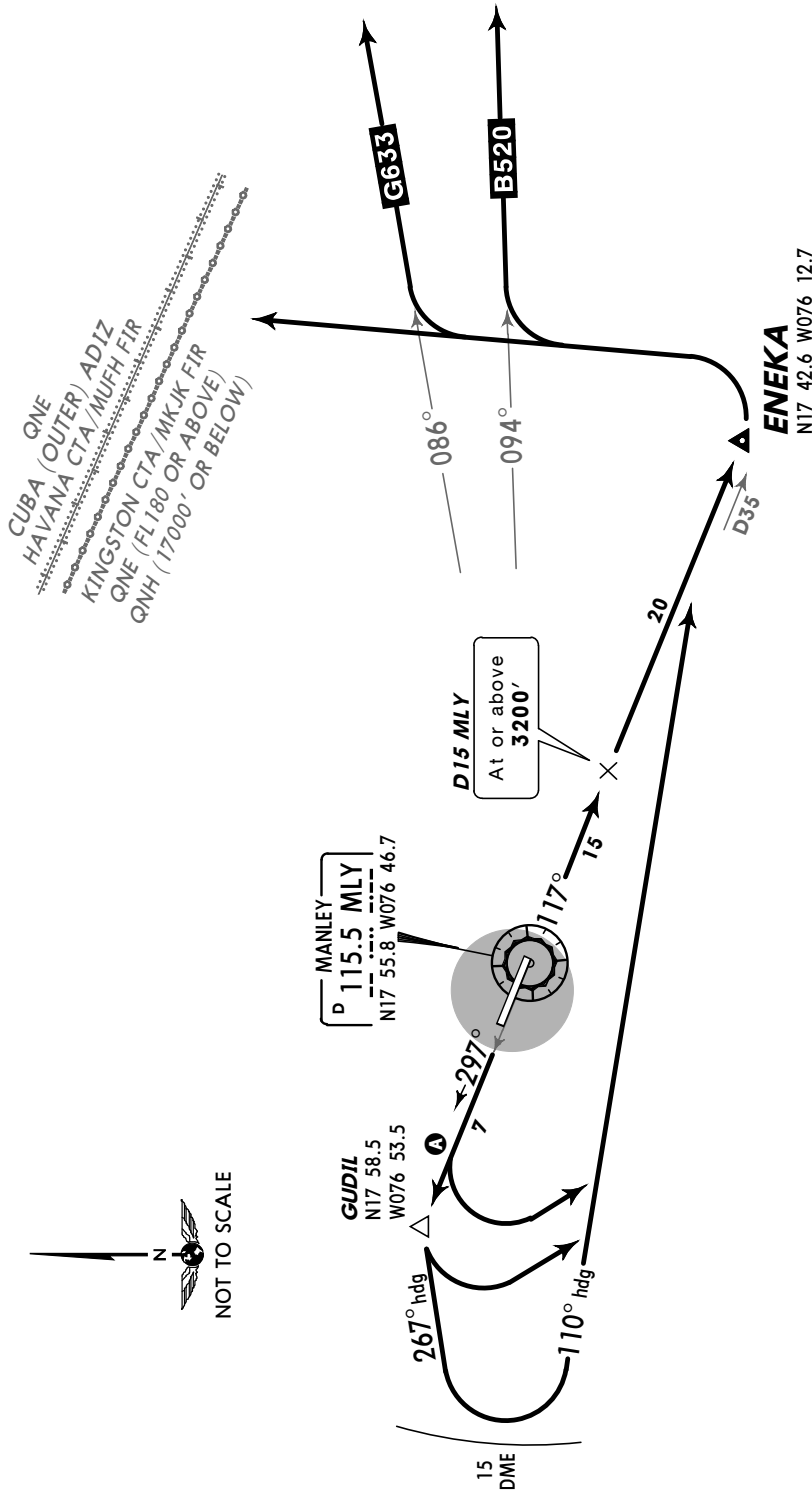


Apt Elev  
18'

Trans level: FL180 Trans alt: 17000'  
**1. VOR/DME required.**  
 2. EASTBOUND departures via ATS routes B-520, G-633, direct NORTHEAST  
 KINGSTON FIR boundary.

**ENEKA FIVE DEPARTURE**  
 [ENEKA5]

**SPEED: MAX 250 KT BELOW 10000'**



INITIAL CLIMB	
RWY 12	Climb on MLY R-117 to at or above 9000' or ENEKA, whichever is earlier.
30	<p><b>A</b> Climb on MLY R-297 at or before GUDIL. Turn LEFT via 110° heading to intercept and proceed via MLY R-117 climbing to at or above 9000' or ENEKA, whichever is first.                      (If unable to cross 2000' at or before GUDIL, use maximum rate of climb direct to GUDIL, then turn LEFT and proceed via 267° heading climbing to at or above 2000' within MLY 15 DME).</p>
ROUTING	
Turn LEFT to intercept assigned route.	