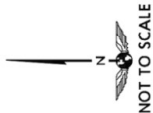
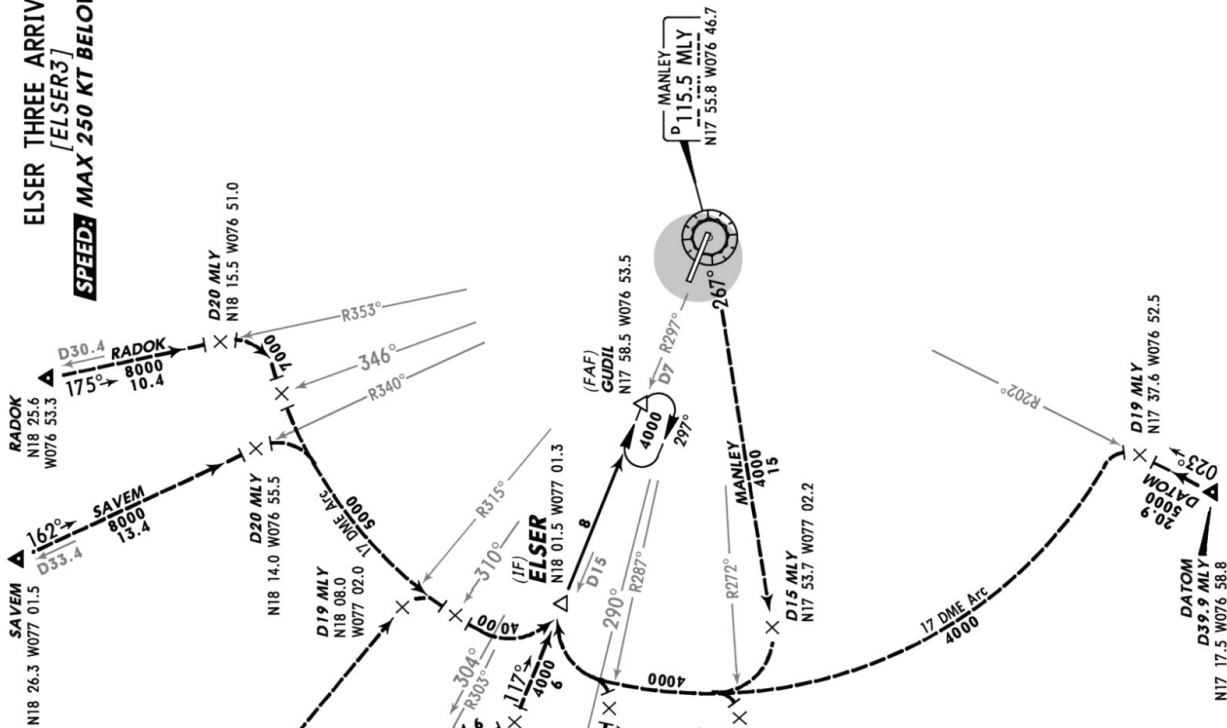


MKJP/KIN
NORMAN MANLEY INTL

ATIS 127.7 Apt Elev 18' Alt. Set: hPa (IN on req) Trans level: FL180 Trans alt: 17000' VOR/DME required.

ELSER THREE ARRIVAL
(ELSER3)
SPEED: MAX 250 KT BELOW 10000'



TRANSITIONS	
BOSOM	From BOSOM to ELSER: Via MLY R-272 inbound to D19 MLY, then turn LEFT via MLY 17 DME Arc and MLY R-297 inbound.
DATOM	From DATOM to ELSER: Via MLY R-202 inbound to D19 MLY then turn LEFT via MLY 17 DME Arc and MLY R-297 inbound.
KEMBO	From KEMBO to ELSER: Via MLY R-303 inbound to D25 MLY, then turn RIGHT via a 151° heading to MLY R-297/D21 then via MLY R-297 inbound.
KESPA	From KESPA to ELSER: Via MLY R-287 inbound to D19 MLY, then turn LEFT via MLY 17 DME Arc and MLY R-297 inbound.
LIBEX	From LIBEX to ELSER: Via MLY R-315 inbound to D19 MLY, then turn RIGHT via MLY 17 DME Arc and MLY R-297 inbound.
MANLEY	From MLY to ELSER: Via MLY R-267 outbound to D15 MLY, then turn RIGHT via MLY 17 DME Arc and MLY R-297 inbound.
RADOK	From RADOK to ELSER: Via MLY R-353 inbound to D20 MLY, then turn RIGHT via MLY 17 DME Arc and MLY R-297 inbound.
SAVEM	From SAVEM to ELSER: Via MLY R-340 inbound to D20 MLY, then turn RIGHT via MLY 17 DME Arc and MLY R-297 inbound.
ROUTING	
From ELSER to GUDIL via MLY R-297 inbound descending to ATC assigned altitude. Hold at GUDIL unless/until cleared for the VOR DME Rwy 12 approach procedure.	