

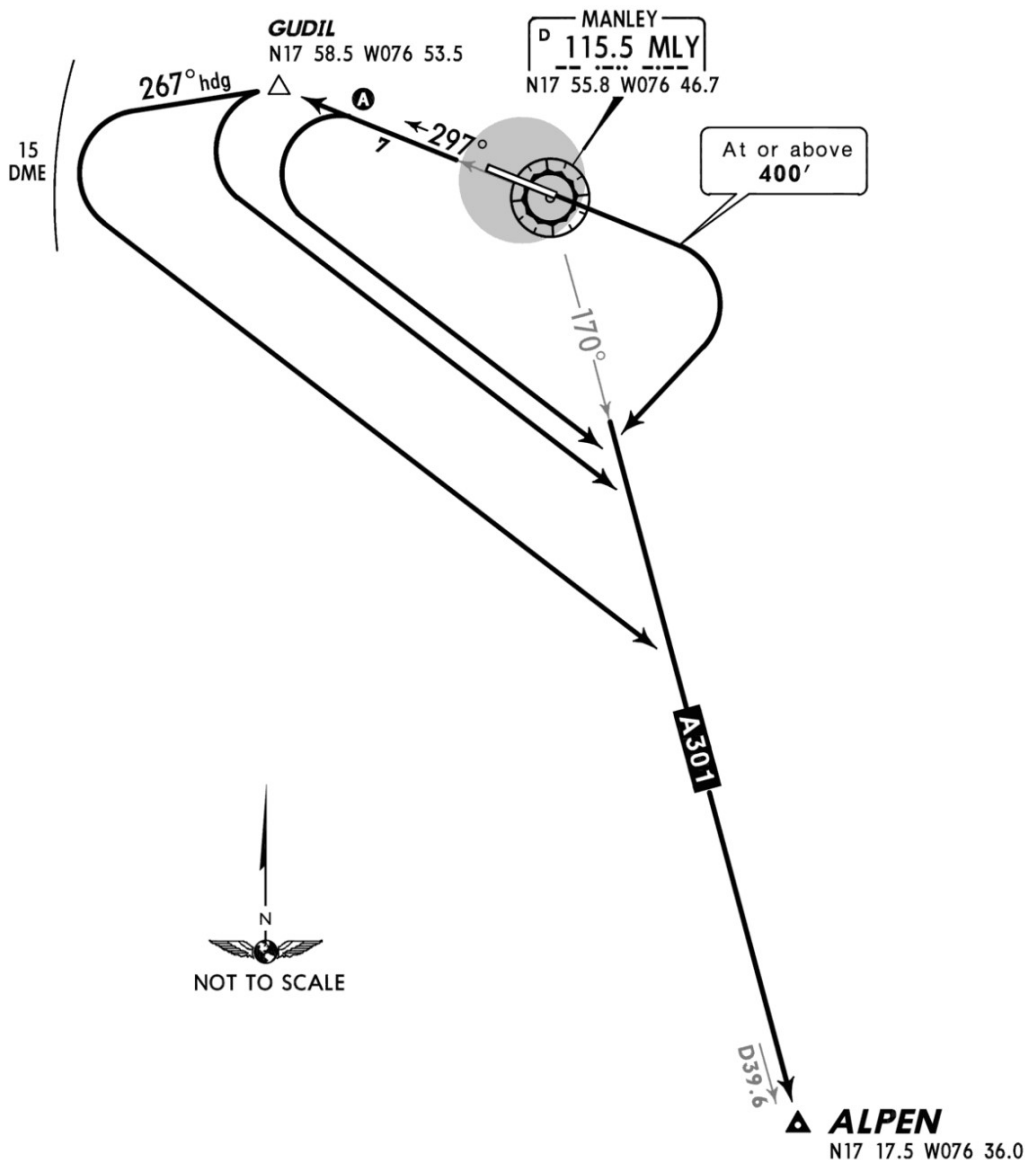
Apt Elev
18'

Trans level: FL180 Trans alt: 17000'
1. VOR/DME required.
2. SOUTHBOUND departure via ATS route A-301.

ALPEN ONE DEPARTURE

[ALPEN1]

SPEED: MAX 250 KT BELOW 10000'



| RWY | INITIAL CLIMB |
|---|--|
| 12 | Climb on runway heading to at or above 400', then turn RIGHT. |
| 30 | Ⓐ Climb on MLY R-297 to cross 2000' at or prior to GUDIL. Then turn LEFT. (If unable to cross GUDIL at 2000', use maximum rate of climb direct to GUDIL, then turn LEFT via 267° heading climbing to 2000' within MLY 15 DME). |
| ROUTING | |
| Intercept and proceed via MLY R-170 to ALPEN. | |

CHANGES: Airport elevation.

© JEPPESEN, 2005, 2014. ALL RIGHTS RESERVED.